

Emergency Management Plan Executive Briefing

University Leadership Council
October 2025



Overview:

- Affirm UTHealth Houston EMP congruency with National Incident Management System (NIMS)

UT Physicians and HCPC/Dunn have companion EMP's that augment the campus-wide EMP

- Brief description of major EMP elements
- Two example scenarios (based on risk assessment and retrospective analysis)

Bomb threat

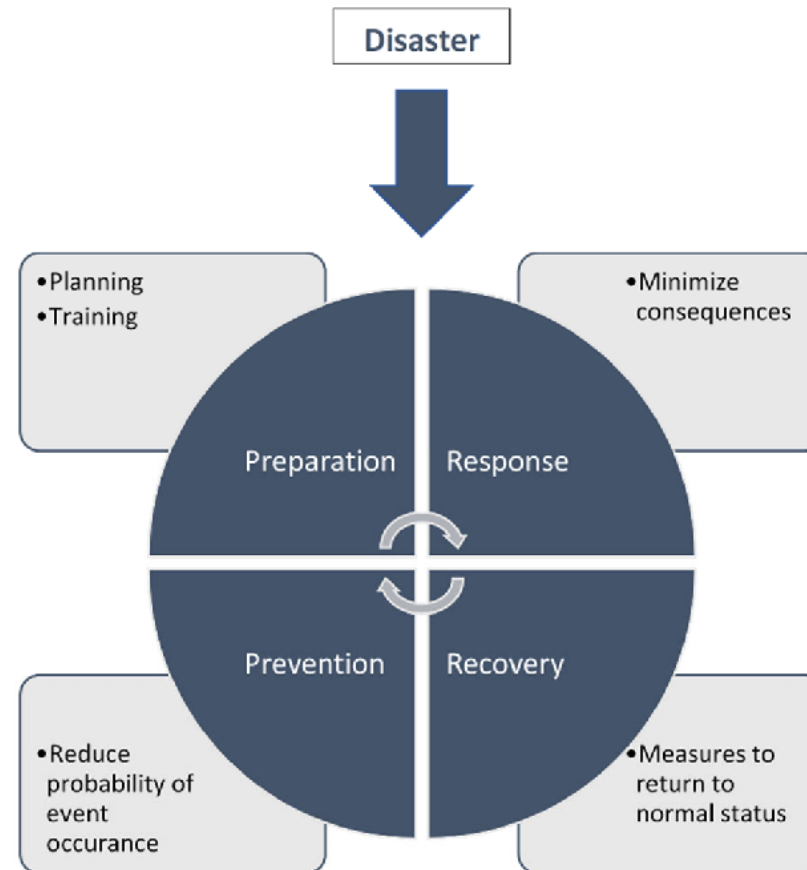
Inclement weather (Hurricane/Flooding)

National Incident Management System (NIMS)

- NIMS – Federally required comprehensive national approach, applicable at all jurisdictional levels and across functional disciplines for responding to emergencies
- NIMS training required for emergency responders and emergency management team (you)
- **ICS-402 Incident Command System for Executives / Senior Officials – abbreviated overview for leadership**
- Full length NIMS required training is online
 - Courses: IS 700.a, 100.HE, 200.b, 800.b <http://training.fema.gov/IS/NIMS.asp>

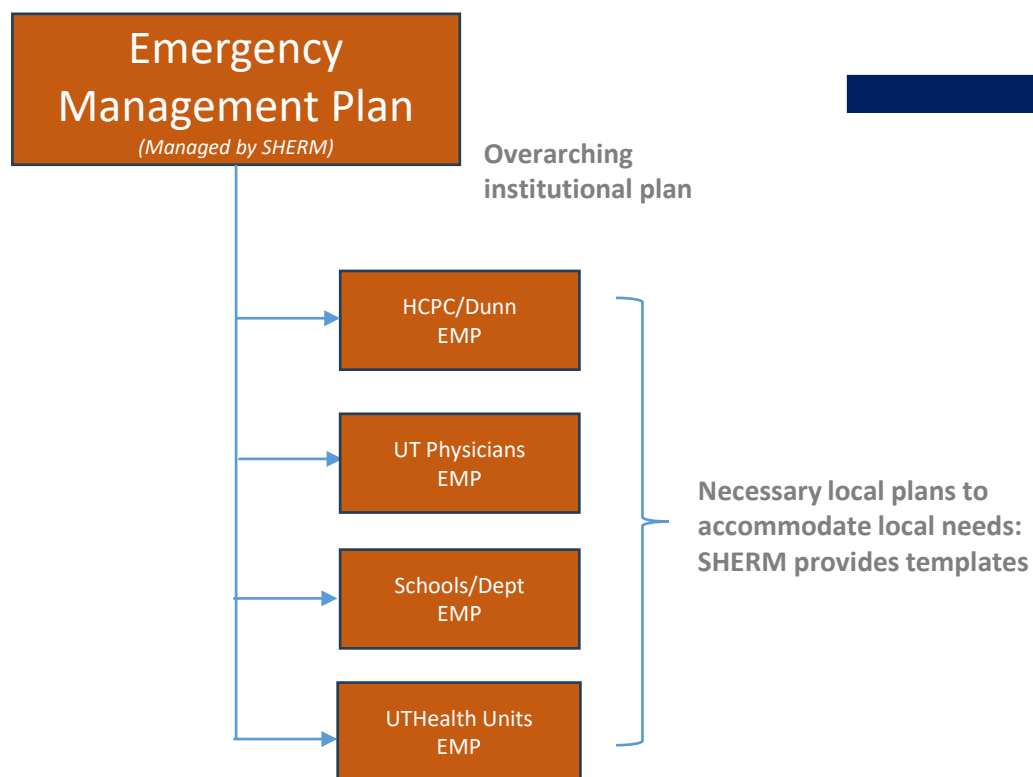
Emergency Management Scope

- **Prevention**
- **Preparedness**
- **Response**
- **Recovery**

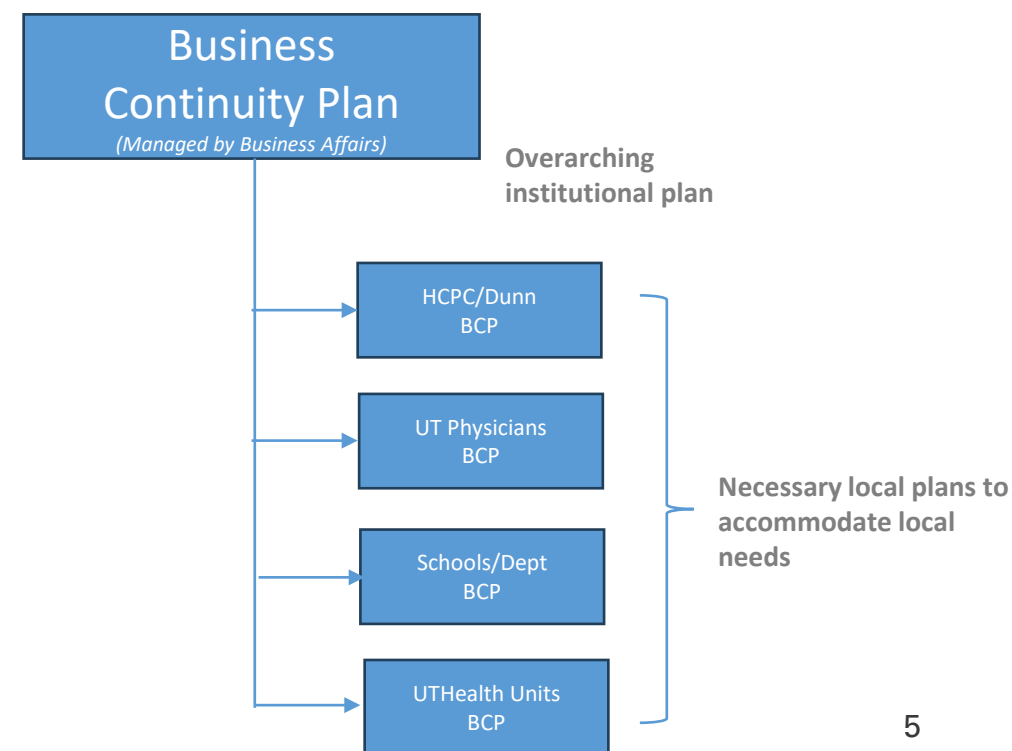


Necessary components of the UTHealth Houston Emergency Management Plan(s) and associated Business Continuity Plan(s)

Emergency Event/Response



Business Continuity Steps/Decisions



Prevention



- **SHERM Routine Surveillance:**
 - Safety surveys for lab, clinic, facility, and environmental
- **System Testing:**
 - Fire alarm and fire suppression systems, emergency generators, flood doors, UTHouston ALERT text message system
- **Safety Training:**
 - Student and Employee safety training, Area Safety Liaisons, Facilities & Auxiliary Enterprises maintenance staff, Animal Care, UT Police

Preparedness

▪ **Communication**

- Updated contact information

▪ **Institutional Awareness and Education**

- UTHHealth Houston mobile app
- Emergency preparedness fliers/postings/intranet articles
- UTHHealth Houston dedicated emergency website (www.uthealthhoustonemergency.org)
- Emphasis on preparedness at home and the workplace

▪ **Routine Drills**

- Fire drills
- Flood door drills
- Hazardous material spill drills
- Tabletop exercises



Key Units Involved with EMP

- **Safety, Health, Environment & Risk Management (SHERM):**
EMP development, testing, emergency response for health and safety, emergency notifications for weather incidents, training
- **Facilities, Planning & Engineering and Auxiliary Enterprises:**
Monitoring advisories, protecting individuals and property
- **UT Police:**
Monitoring advisories, emergency notifications for security related incidents, crowd and access controls
- **Public Affairs:**
Institutional and external communications
- **Information Technology:**
Protecting computer systems, ensuring connectivity

Emergency Management Plan Elements

Type of Emergencies

- Inclement weather
- Fire
- Hazardous material releases / theft
- Facility failure
- Bomb, cyber/terroristic threats of violence
- Armed intruder
- Auto accidents
- Medical emergencies

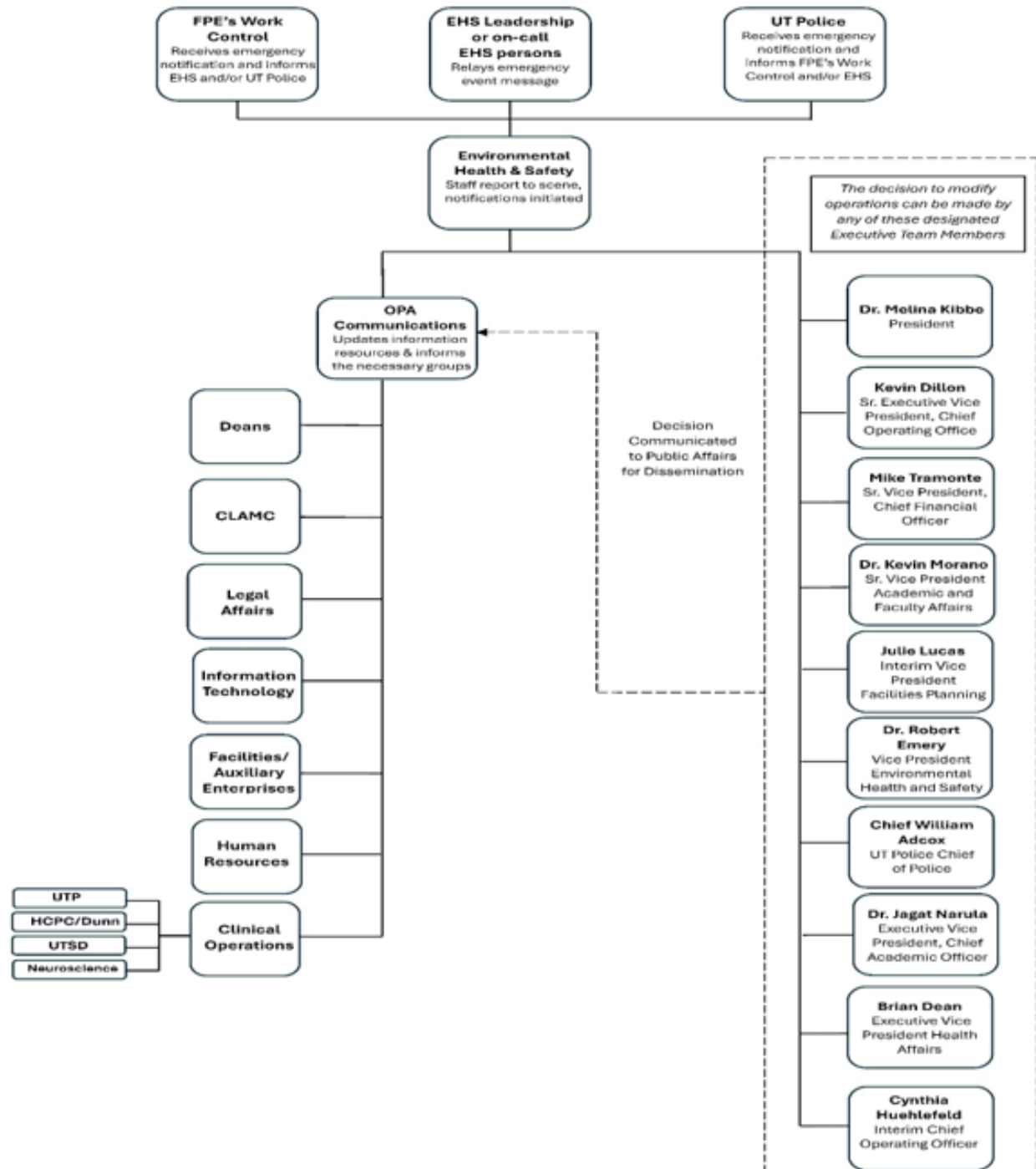
“Level” Classification for Notifications and Actions

- **Level 1** (area)
- **Level 2** (floor)
- **Level 3** (building)

Annex B Implementation of the Plan

The following schematic describes the authority of the UTHHealth Houston Emergency Leadership Team to implement the Emergency Management Plan and mobilize the necessary staff and resources to address emergency effectively.

LEVEL 2 & 3 UNIVERSITY
PROCEDURE



Emergency Communications Options

- UTHHealth Houston ALERT text messages for **imminent threats**
- UTHHealth Houston intranet emergency banner
- Targeted or mass email (*note: inherent delay*)
- Web at www.uthealthhoustonemergency.org (*offsite hosting backup*)
- Fire Alarm Control Panel voice announcement capability
- Campus television monitors
- Designated voicemail lines with informational messages
- Social media
- Local media

Controlled Access

- UTHealth Houston never “closes”
- When initiated, controlled access engages **essential personnel**
- Non-essential personnel may access facilities as deemed necessary by using badge access (similar to nights, weekends, holidays)
- Under some circumstances, if needed, non-essential personnel sign in / sign out at the building’s guard desk and are escorted while in the facility

EXAMPLE 1

Bomb, Cyber or
Terroristic Threats
of Violence



Typical Event

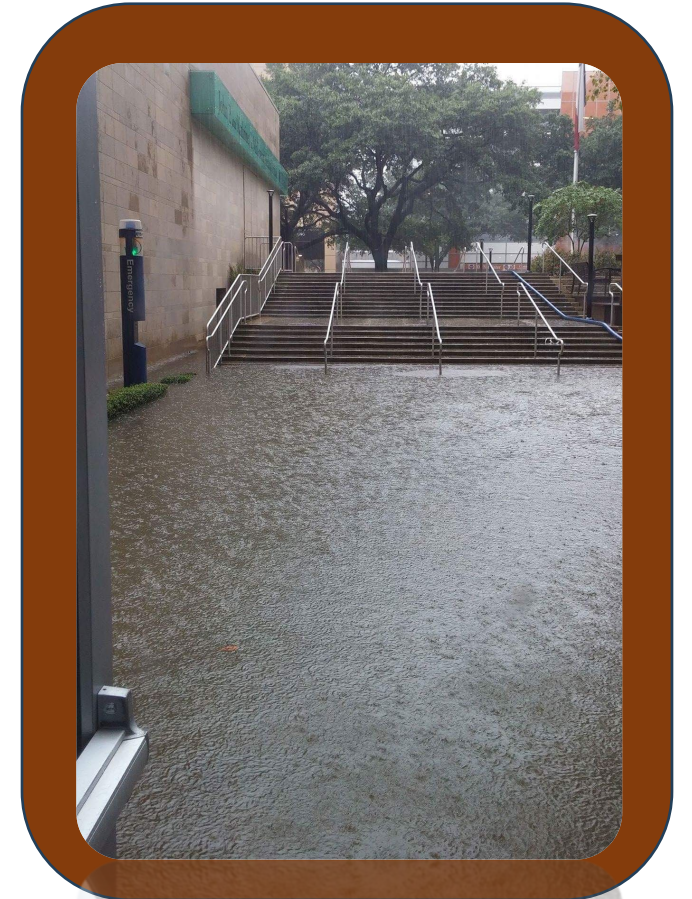
- Threat called in, mailed in or submitted electronically (e.g. email, social media, etc.)
- Key details of message should be noted, reported to UT Police
- If threat is non-specific, experts suggest not evacuating, but to conduct low-key sweep of building for suspicious items
- If the threat is specific (e.g. time, location, etc.) experts suggest evacuation, and subsequent sweep
- **Ultimate decision to evacuate rests with Emergency Leadership Team, not UT Police**

Bomb Threat Awareness

- Based on lessons learned from previous threat incidents
- Additional information incorporated into the EMP and has been included in training provided by UT Police
- Area Safety Liaisons provided with similar training

EXAMPLE 2

Inclement Weather:
Flooding or
Hurricane



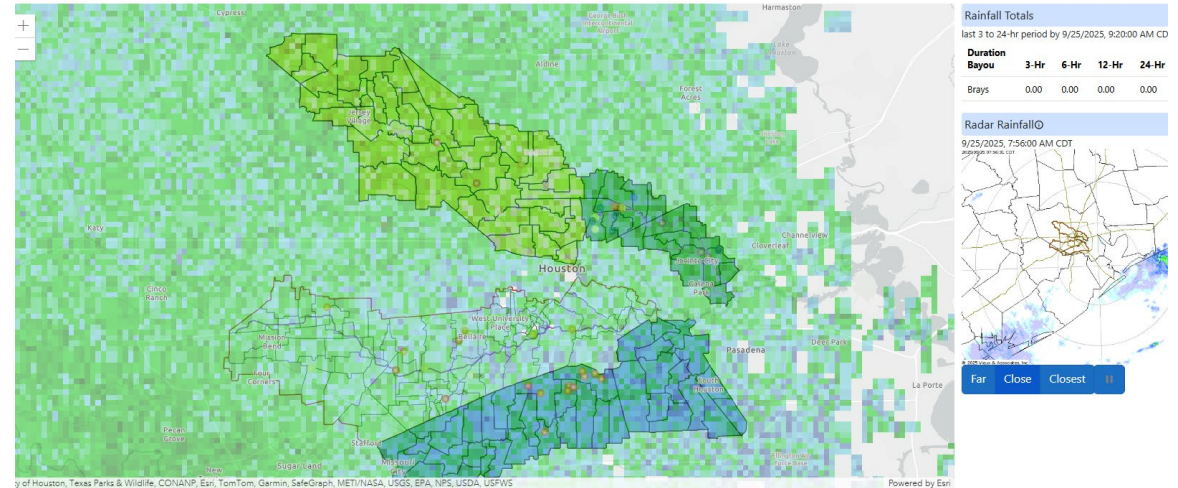
City of Houston

Flood Information and Response System (FIRST)

- Replacing *previous “TMC Rice Flood Alert System”*, which has been discontinued due to the cessation of funding
- **FIRST** is currently under development – flood assessment and mapping tool for critical infrastructure in City of Houston to assist with emergency operations, closures, and evacuations, as well as allow the public to assess their own individual risk during storm events
- EHS will closely follow the development of this resource for incorporation into our decision-making process in the future

FIRST Flood Information and Response System for the City of Houston

Home Map FAS Camera About



FIRST Flood Information and Response System for the City of Houston

Home Map FAS Camera About

HARRIS GULLY CAM



Bayou cameras provide vital water levels and visual confirmation during a flood event. The Harris Gully Gage was selected as the critical point to view gage activity for the Rice/TMC system. Gully levels are automatically communicated to TMC.

Hurricane Preparation Sequence

- **96** hours before landfall: preparations begin
- **72** hours: **Alert** status – preparations ramp up
- **48** hours: **Watch** status – final preparations
- **24** hours: **Warning** status – Ride out team arrives. Controlled Access considered, Executive Decisions necessary.
- **8** hours out: **Warning status** – controlled access as needed

Recovery

- **Existing UT System pre-established contracts**
 - Water, fire, smoke damage, etc. – BMS Catastrophe, Cotton
 - Hazardous materials spills – Lone Star Environmental
 - Hazardous waste disposal – Veolia, Stericycle
- **UTHealth Houston “evergreen contracts” & “JOC”**
- **UT System mutual aid agreement**
- **Property Insurance coverage**
 - Fire and all other perils
 - Wind and named storms



Summary

- EMP sets out framework for institutional emergency response and management
- Key executive decisions are typically:
 - *Open or Controlled Access?*
 - *Evacuate or shelter in place?*
 - Note that decisions can sometimes be impacted by local or state agency decisions
- BCP facilitates institutional recovery
- Focus on prevention and preparedness
- **Each emergency situation is different, but in every such event, cooperation and communications are key!**





Questions?

EHS Main Office

713-500-8100

After Hours Hotline

713-500-5832

Hazardous Waste Collection

713-500-5837

QR Code to access
SHERM Webpage:




UTHealth
Houston